

GAC APPLICATION NOTE (all of the components specified are sold separately)

GAC COMPLETE ELECTRONIC GOVERNING SOLUTION FOR THE CATERPILLAR G3406 NATURAL GAS ENGINE

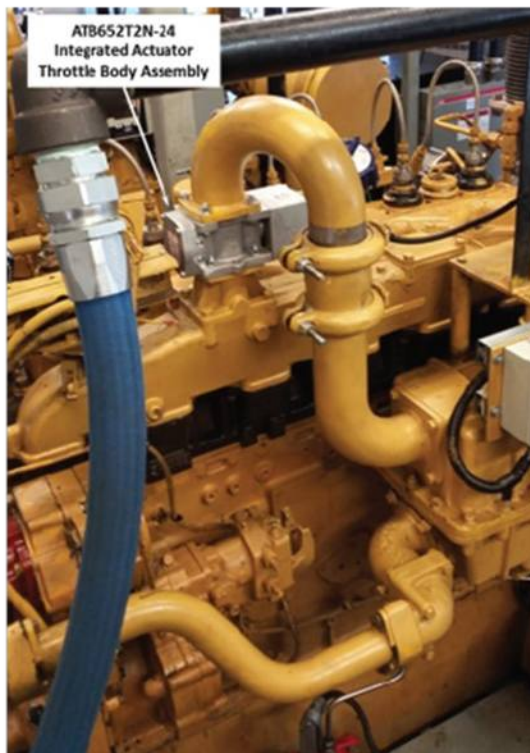
| | |
|---|---|
| Document Title: | Caterpillar G3406 Governor Upgrade with GAC Equipment |
| Customer / OEM: | Caterpillar |
| Application(s) | Industrial Natural Gas Engine |
| Engine Make / Model | 14.64L, 6 cylinder |
| Equipment Make / Model: | |
| Fuel System Type & Make / Model: | Natural Gas |
| Operating Speed(s): | Idle to 3600 rpm |
| Battery Voltage: | 12/24 VDC |
| Installed Products: | <ul style="list-style-type: none"> • Actuator: ATB652T2N-24 • Speed Control: ESD5526 • Interface Module: EAM121 |
| Summary: | The Governor Shop, of Edmonton, Alberta Canada recently upgraded a 14.64L, 6 cylinder Caterpillar G3406 engine to a GAC control system, noting its ease of installation and superior performance. The EAM121 allows transparent compatibility with the Woodward Easygen controller. |

BEFORE AND AFTER INSTALLATION OF THE ATB652T2N-24 HIGH PERFORMANCE SEALED, INTEGRATED ACTUATOR / THROTTLE BODY ASSEMBLY TO THE G3406 ENGINE.

As Received Remote Actuator & Linkage



GAC ATB652T2N-24 Installed



**ESD5526E Governor with the Anti-Windup feature
specifically designed for gaseous fueled engine control**



EAM121 Interface Module

